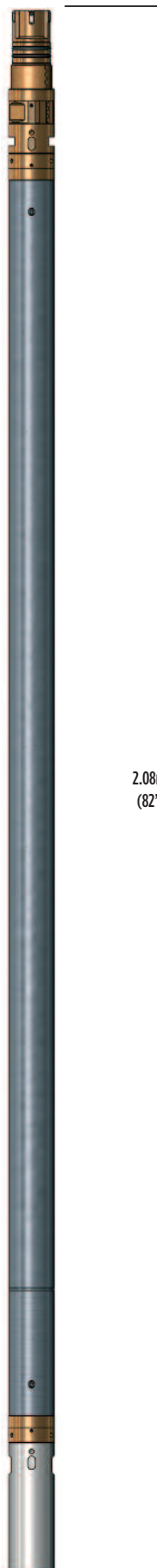


Telemetry (GTM)

Accelerometers &
Magnetometers

Gamma



2.08m
(82")

Telemetry Module

The GeoKey® Telemetry module with Navigation pack is the topmost acquisition tool in the stack, immediately below the Downhole Tension/Compression module.

Its main function is to collect and combine digital data from all other tools and to transmit this in a digital form via the logging wireline to the surface acquisition system. It also provides control functions and tool power to the other logging tools.

Principle of Measurement:

All tools in the stack communicate with the Telemetry module over a common internal RS485 data bus. The Telemetry module organises this data and transmits it to the surface using proprietary high-speed protocol. Data is acquired on a depth basis with a sample interval selected to optimise measurement resolution/logging speed.

SPECIFICATION:

Features

- Bi-directional digital transmission
- Compatible with industry standard 5/16" or larger diameter cable
- Continuous borehole orientation log

Measurements

- Natural Gamma
- Vector data sourced from orientation package creates:
 - Borehole inclination
 - Borehole direction
 - Borehole drift
 - True vertical depth
 - Relative Bearing
 - Magnetic Tool Face
 - Total G field
 - Total B field

Applications

Natural gamma:

- Lithology indication
- Shale measurement
- Bed-boundary/bed thickness measurement
- Correlation between logs and wells

Borehole inclination and direction:

- QA of borehole construction
- Bed-thickness correction
- Bed-thickness estimation
- Surveying and deviation checks

Operating Conditions

- Borehole type: open hole Ø:102mm (4") to 305mm (12")

Specifications

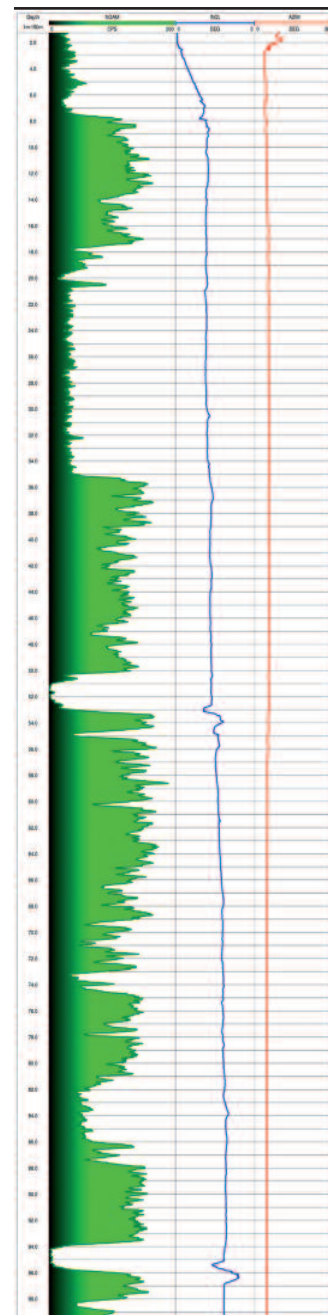
- Diameter: 63mm (2.5")
- Length: 2.08m (82")
- Weight: 23kg (51lb)
- Max. temperature: 125°C
- Max. pressure: 86MPa (12,500psi)
- Inclinometer: Triaxial Accelerometers
- Azimuth: Triaxial Magnetometers
- Natural gamma detector: 101 mm x 38 mm NaI(Tl) Scintillation crystal

Part Numbers

- I017919 Telemetry - includes gamma, Navigation pack

Accessories:

- I015464 Natural gamma check calibration blanket
- I004127 Make-up plate
- I004128 Assembly wrench



Example of logging data

TAE KWANG ELECTRONICS CORPORATION

PHONE : 02 479 2703 FAX : 02 479 2705 e-mail : taekwang@tkec.co.kr www.tkec.co.kr